

Location Plan

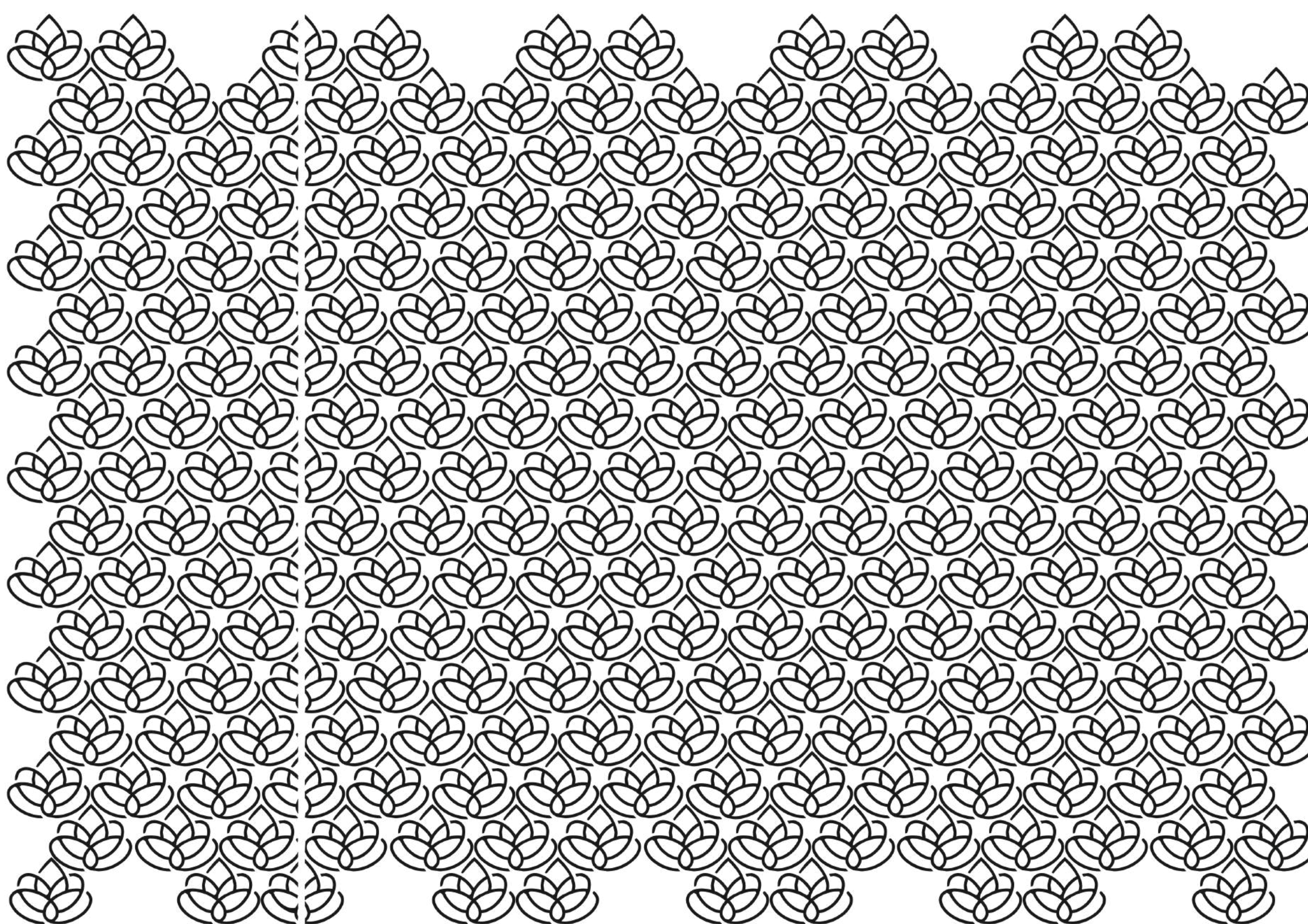


Location Scan



Website Scan

Contact for more details:



Mayuri's Fortune Homes

Sudireddypalli Road, Kurnool



INSPIRED LIVING

mudrika 9849407215



#5, Gayatri Estate,
Kurnool, AP- 518002
Ph: 9346588679
contact@raagamayuribuilders.com
www.raagamayuribuilders.com



Flat # 301, Plot # 545B, Sri Ram Nagar,
Kondapur, Hyderabad, TS - 500084
Ph.: 9948050006, 9618300272
info@designgarchitects.com
www.designgarchitects.com



AkshayaInfra Consultants Pvt. Ltd
Architects & Engineers

1st Floor, Bhavana Enclave, VI Phase,
K.P.H.B Colony, Kukatpally,
Hyderabad- 072. TS, India.
Ph.: +91-40 – 23154848 & 4949
akshaya@akshayainfra.com



MicroScapes
MS Landscape

Beside Fortune Indra Villae,
Sarojini Naidu Nagar, Borabanda,
Madhapur, TS - 500081
Ph.: +91 9581013999
www.microscapes.in



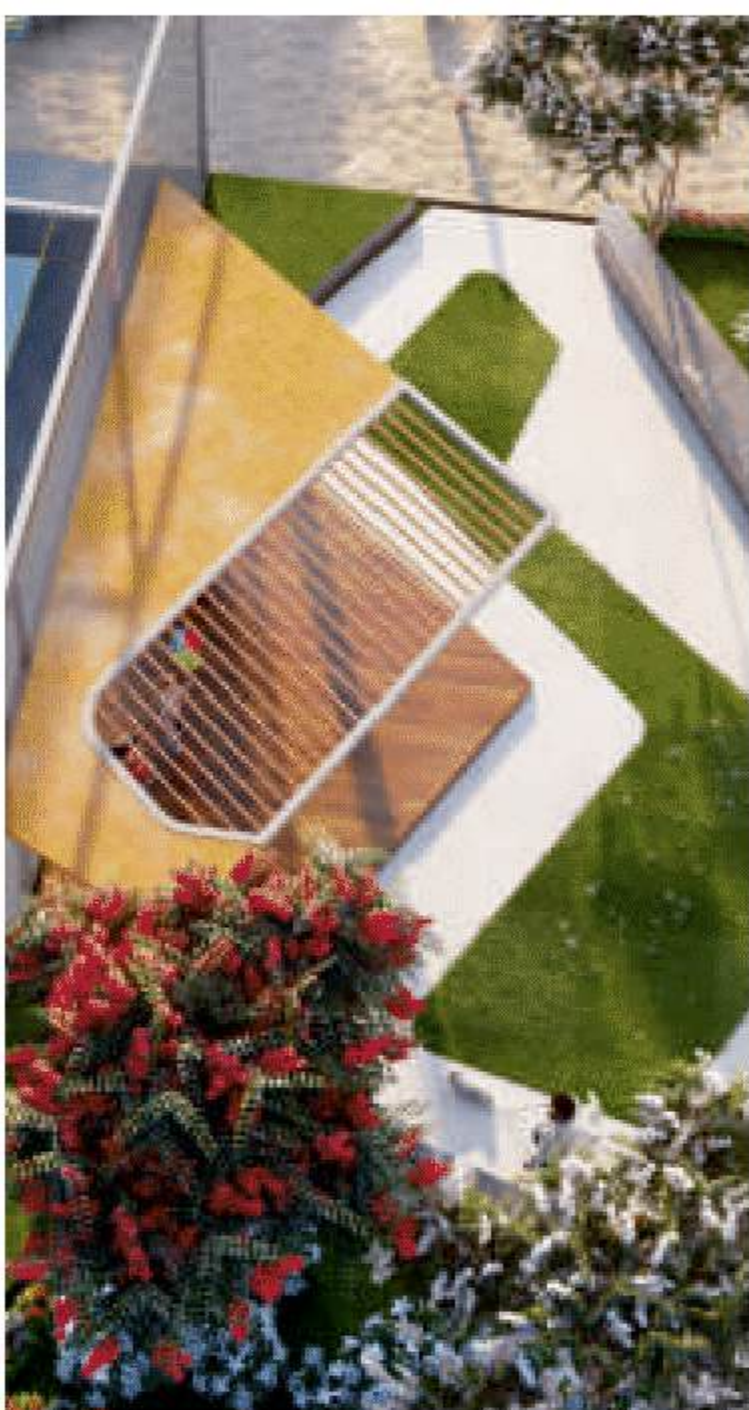
Vedhansha's Fortune Homes, a positive place with happy vibes. Innovation inspired living and amenities way ahead of our present time. With a vision to deliver futuristic projects, Vedhansha Infra has combined unparalleled luxury with latest cutting edge technology.

With a low density of houses within the community, Vedhansha Infra offers all the space you need to do more of what you enjoy. Our exclusive Clubhouse is a place where you can truly indulge yourself. Get your heart pounding at our fitness spots such as the Swimming Pool, Walk Area and Kids Play area. Smash away to your heart's pleasure with a game on the badminton court, skating and cricket net.

Life Style

So, come home to the magnifying lifestyle for an empowered experience and enjoy this little life's reward that you truly deserve.





Thoughtfully crafted Vedansha's Fortune Homes, independent villas are spread across 6 acres of beautiful landscape, cautiously away from the noise but just about close to prime locations. Perfected innovations abound in these villas and each villa has a story to tell, transporting you to the heart of its inspiration. Authentic and painstaking detailing of these designs is our biggest asset.

Mayuri's
**Fortune
Homes**
Sudireddypalli Road, Kurnool





Smooth & Clean Roads

That make you have hassle-free commuting

Roads with cheerful shrubs and street lights create a sheer pleasure and comfort while you are walking around on roads. These roads are well designed and constructed charmingly narrow that makes cycling kids and pedestrians safe. Also, roads are ethically maintained along with beautiful trees that always creates a pleasant experience to the residents.





Lavish Clubhouse with a bouquet of sports and recreational amenities!! The elegantly designed clubhouse at Vedansha's Fortune Homes, a perfect sporting, entertainment and wellness infrastructure. The well-equipped Gym and Yoga room supports your work-out regimen and provides you with peace of mind. A multi-purpose Function Hall and Guest rooms helps you realize your social gathering objectives. You can spend your evenings playing your best indoor games to lift up your spirits. And you can do all your grocery shopping in the Supermarket without stepping out of your compound.

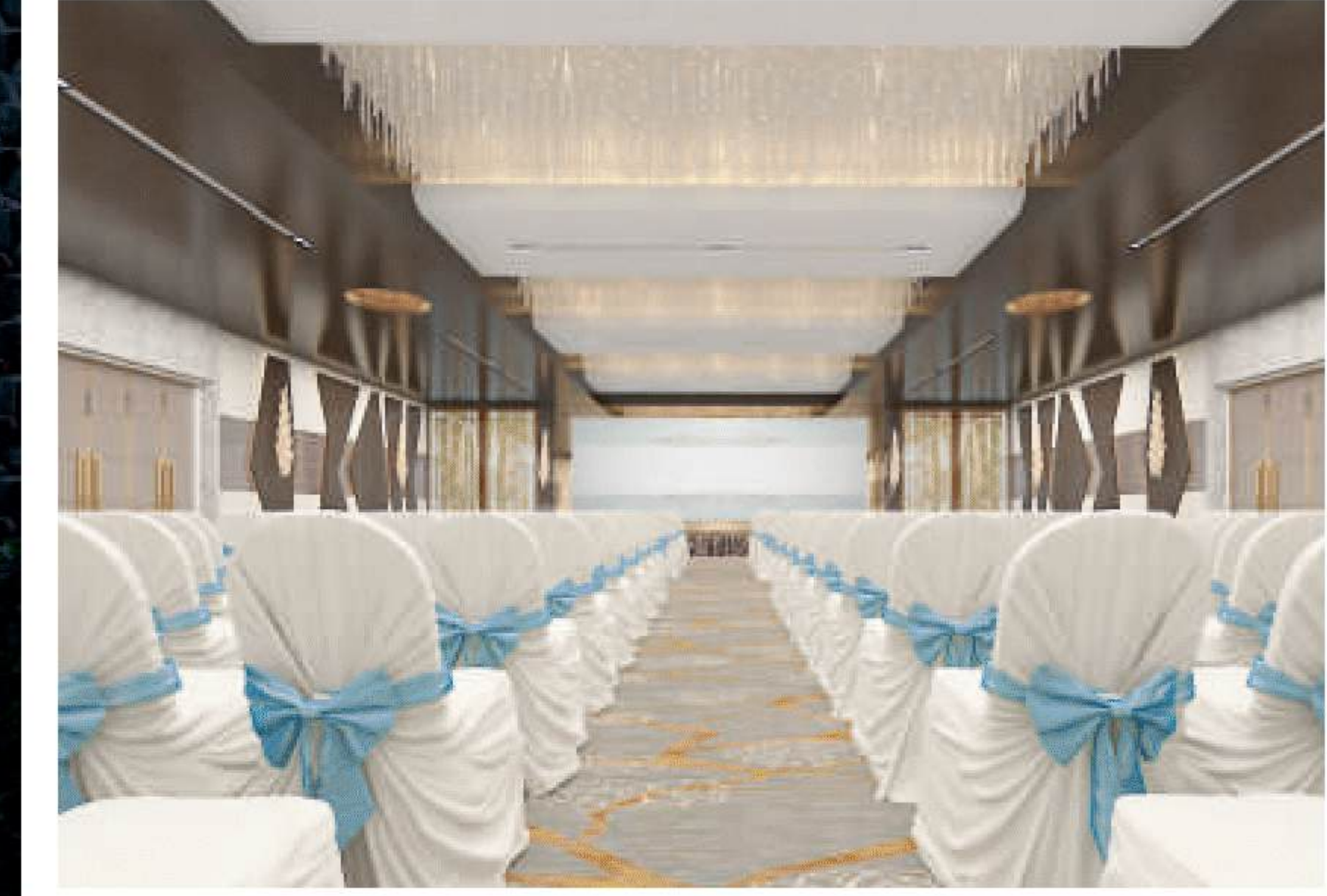


Lavish Clubhouse with a bouquet of sports

& recreational amenities



RAAGA MAYURI BUILDERS
a planned community



EAST FACING VILLA



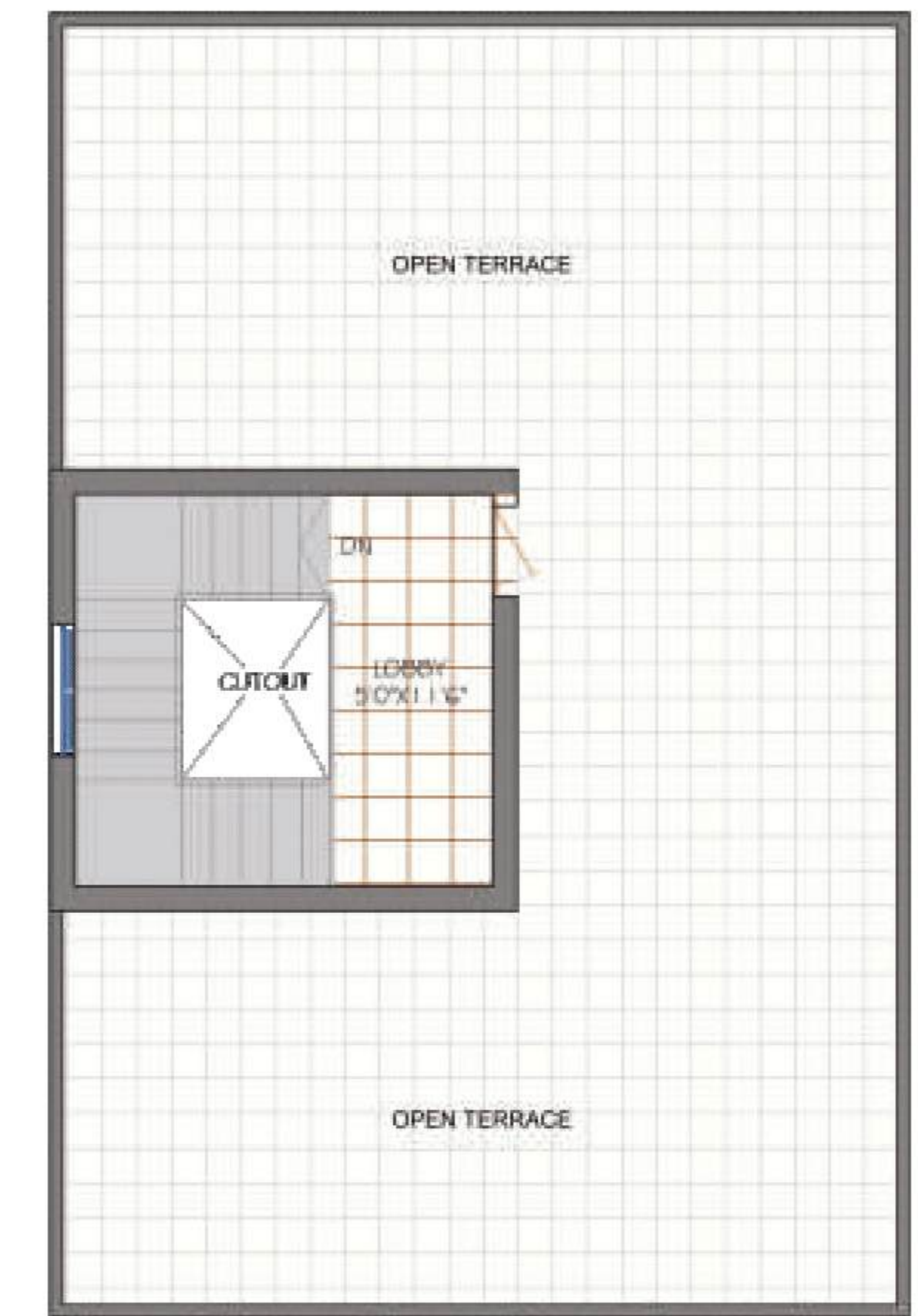
176 Sq Yds East Facing
Builtup Area - 2279 Sft



GROUND FLOOR PLAN



FIRST FLOOR PLAN



TERRACE



WEST FACING VILLA



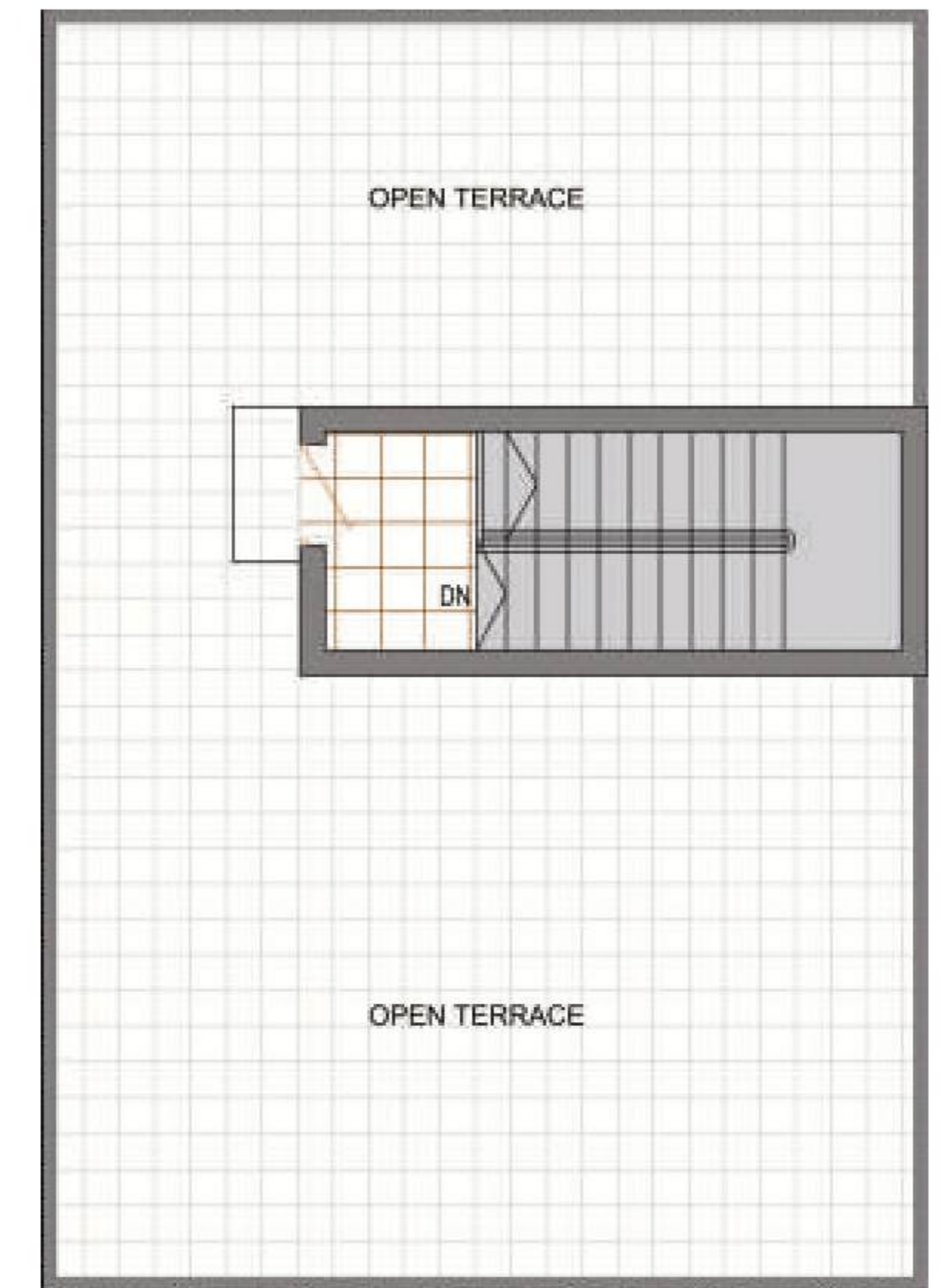
176 Sq Yds West Facing
Builtup Area - 2145 Sft



GROUND FLOOR PLAN



FIRST FLOOR PLAN



TERRACE



Srisailem

Kurnool

Sudireddypalli Road

Layout Plan



Amenities

- A Entrance / Exit
- B Club House
- C Swimming Pool
- D Skating Rink
- E Party Lawn
- F Badminton Court
- G Children Play Area
- H Cricket Net

Villa Dimentions

- 234 Sq Yds / 4.84 Cents (36'x58.5')
- 199 Sq Yds / 4.11 Cents (36'x49.2')
- 192 Sq Yds / 3.96 Cents (36'x48')
- 176 Sq Yds / 3.64 Cents (33'x48')
- 175 Sq Yds / 3.62 Cents (33'x48')

Note: Each plot area has mentioned in Sq. Yds. and built-up area in Sft.





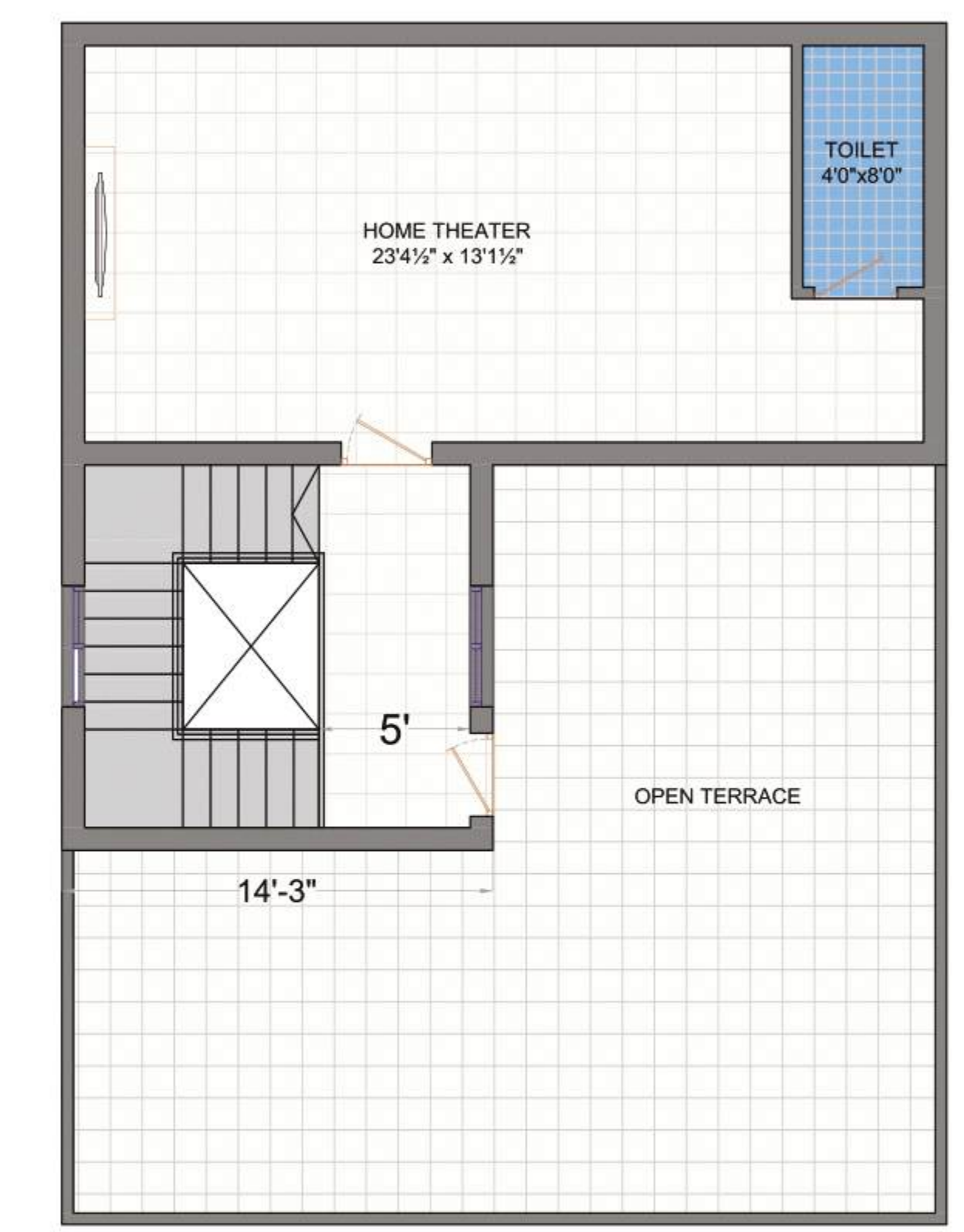
192 Sq Yds East Facing
Builtup Area - 2990 Sft



GROUND FLOOR PLAN



FIRST FLOOR PLAN



TERRACE



WEST FACING VILLA



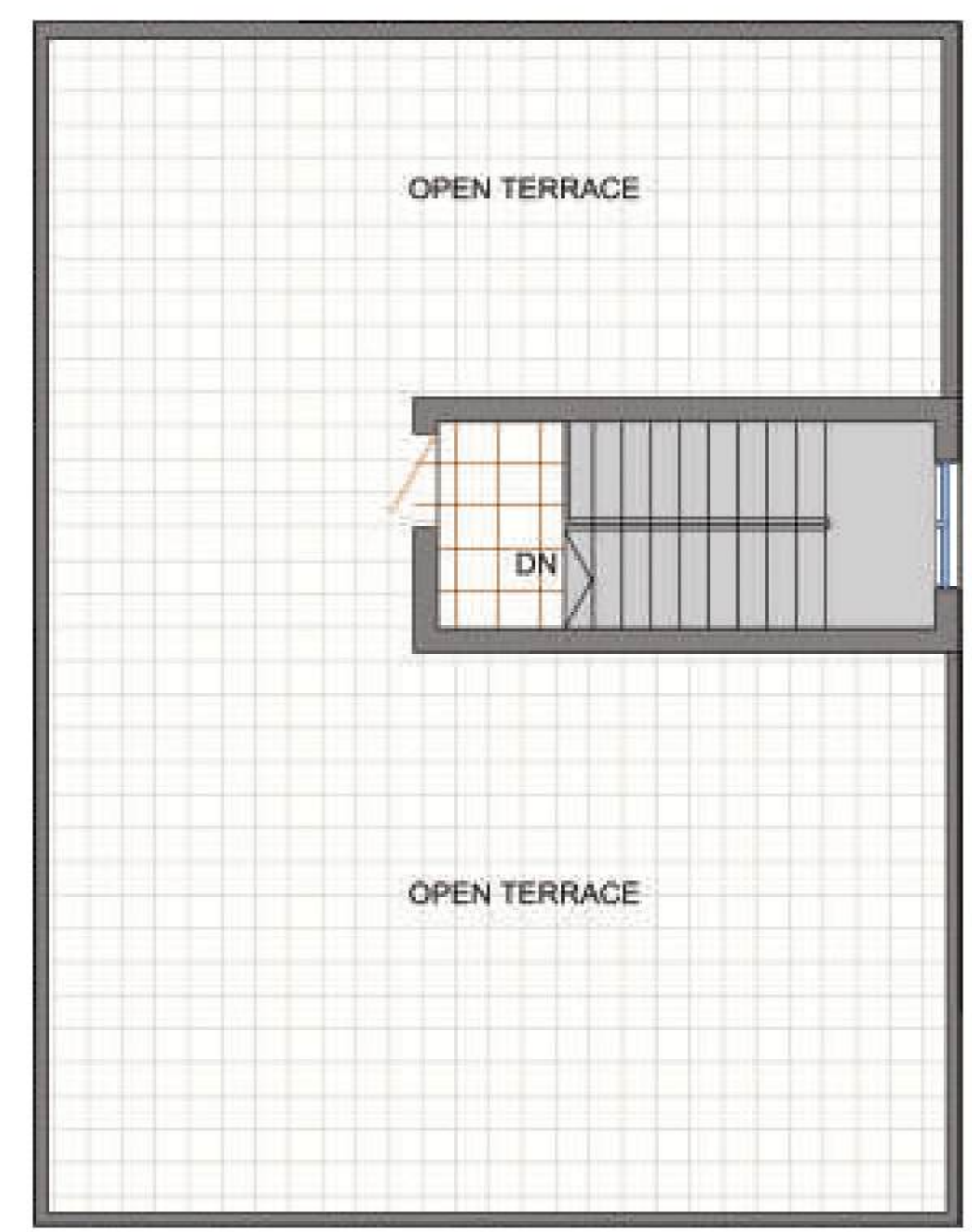
192 Sq Yds West Facing
Builtup Area - 2362 Sft



GROUND FLOOR PLAN




FIRST FLOOR PLAN



TERRACE





FOUNDATIONS AND STRUCTURE

- RCC frame structure with M 20 grade of concrete as per IS code.
- Red Bricks /CC blocks 9 inches thick for all outer walls and 4.5 inches for inner walls.



WALL FINISH AND PAINTING

- External-Cement plastering with two coats of external emulsion paint of Asian/Berger or equivalent.
- Internal-Smooth Cement plastering with emulsion paint of Asian/Berger or equivalent.
- Ceiling- Cement plastering with emulsion paint of Asian/Berger or equivalent.
- Elevation- Features as per architecture design.



DOORS

- MAIN DOOR: Imported teak wood/hard wood frame with PU polish or NCL Doors or equivalent.
- TOILET, UTILITY DOOR SHUTTER: Hard wood door frame with one side decorative veneer Polish /flush shutter with enamel painting.



WINDOWS:

- High quality UPVC Windows with clear glass & mosquito mesh in Living / Dining / Bedrooms / Kitchen.




FLOORING

- Living, Dining, Bed rooms, Kitchen: Vitrified tiles of (2'0"x2'0" /2'0"x4'0") Kajaria or equivalent make.
- Balcony,Utility,Bath room: Anti skid ceramic tiles of 2'0"x2'0" Kajaria or equivalent make.
- STAIRCASE: Granite or equivalent with S.S handrail as per architecture drawings.
- CAR PARKING: Tandoor stone/parking tiles or equivalent.




KITCHEN

- PLATFORM: Black Granite platform.
- SINK: Stainless steel sink
- DADO: Glazed ceramic tile dado up to 2 feet above counter.
- Provision for fixing of chimney and water purifier.




TOILETS

- WASH BASINS: White colored wash basins in MBR, GBR, CBR and Dining hall of make Hindware / Parry ware or equivalent
- SANITARY WARE: White colored EWC of Hindware/Parry ware or equivalent.
- SHOWER : Single lever diverter with spout and overhead shower with CP fittings of Jaguar or equivalent.



ELECTRICAL

- High quality concealed copper wiring Finolex /Havells or equivalent.
- Good quality of modular electrical switches of Anchor/ROMA/Havells or equivalent.
- Electrical/AC/ Cable TV /Internet/Telephone points will be provided sufficiently as per architect design.
- Power points for cooking range, refrigerator, microwave, mixer & grinder in kitchen.
- MCB and ELCB will be provided in the Distribution box provision with meter and boards.
- Power supply for washing machine.



PLUMBING

- Centralized underground sump will be provided for entire community as per architecture design.
- The water shall be supplied to individual villas by means of hydro pneumatic pumps.
- Water lines will be CPVC of reputed ISI make.
- Sanitary and rain water will be PVC of reputed ISI approved make.



COMPOUND WALL

- Compound wall of solid concrete blocks or as per architecture design.
- Common compound wall between villas will be as per architecture design.



Party Hall



24 Hrs Security



Super Market



Party Lawn



Yoga Center



Gym



Guest Rooms



Children Play Area



Indoor Games



Skating



Swimming Pool



Clubhouse
10,752 Sft



Multipurpose Hall



Cricket Net

Amenities



CC Roads



Drainage



Underground
Cabling



Street Lights



Landscape
Gardens



Avenue
Plantation



Water Supply
Through Pneumatic



STP
Sewage Plant

Infrastructure



Specifications



Having a pool is not only fun but also a memorable area for entertaining guests. Vedansha's Fortune Homes, a lavish Swimming Pool creates a relaxing experience that quickly relieves your stress and tension. We make sure that these Pools are maintained properly and ready for use all day long.

Enjoy a great pool

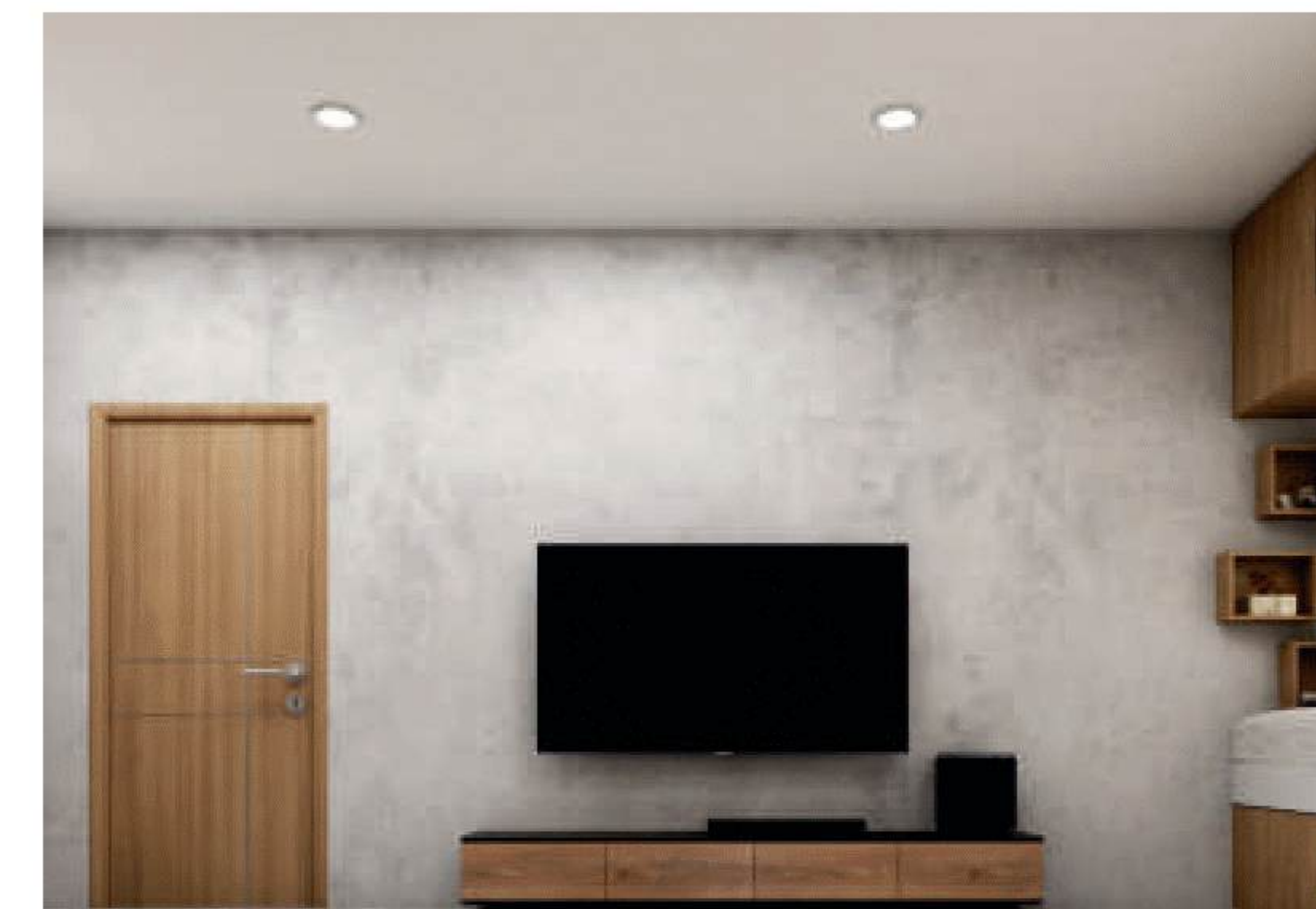
float letting go of all your worries and stress





Start your day with a dose of health and chatter with our Walking Area. The atmosphere here is relaxing and quiet with low amounts of noise. Above all, these walk areas are connected with extensive cycling and walking trails for those who like taking morning and evening walks. Enjoy greenery and fresh air as you walk and make fitness a way of your life.

Pamper yourself with a physical & mental rejuvenation





We are more concerned about our kids having a happy and playful life in childhood.

A Kids Play area offers safety and relaxation to your kids. Besides these, fresh air and physical activities in the Kids Play area adds advantages to your child's health and hygiene.

Exciting outdoor Kids Play Area

for your kids to enjoy



Badminton court take a break from your monotonous routine



A dedicated cricket net to achieve overall fitness goals